



MultiFarrow®

www.nijenkamp.co.uk



MultiFarrow® the story

The MultiFarrow® is designed and developed in close cooperation between Brummelhuis in Hoge Hexel, Netherlands and Nienkamp Livestock Equipment. Brummelhuis has a family pig farm with 500 breeding sows.

Their first ideas about free farrowing were born back in 2012. To get some experience with this type of farrowing crates, they took part in a pilot project free farrowing for the WUR university. In this pilot the first experience were made and they saw the positive effects on the sow and piglets.

Because this type of this farrowing crate didn't match their management and the wish to have a crate which is easy in daily use, they started a new design themselves.

The first sketch were made and Nienkamp brought them to live in 3d design and from there to production. In 2014 they build a room of 6 farrowing crates and started testing. Several rounds were made, after each round adjustments were made based on the experience of the previous round.

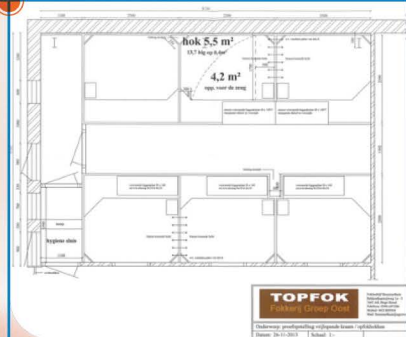
Most of the rounds went good, but a few rounds were bad. The bad rounds had too many crushed piglets. After the balance from testing was drawn up, the design was totally reviewed. At the base of this new design was an old existing farrowing crate of Nienkamp for farrow to wean.

All new 3d models were made and all the old test crates were replaced for this new model.

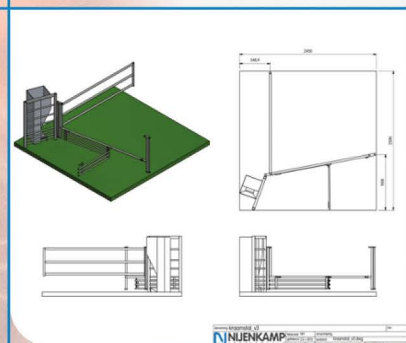
This model turned out to live up to expectations and was improved in some details during new testing.

After a total period of 4 years all experience came together in the shed of 242 crates in free farrowing. The opening of the new shed was in December 2016.

MultiFarrow® was born and after several years' experience in the new shed we can say: 'The results are even better than expected!'



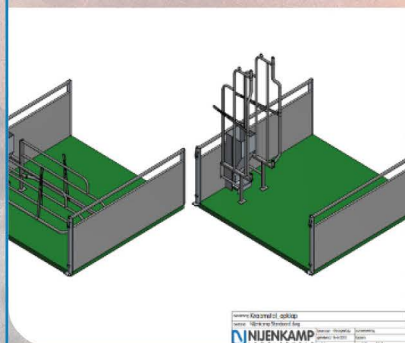
First sketch by Brummelhuis



From sketch to 3d drawing by Nienkamp



Testing out the new crate



First 3d drawings MultiFarrow® by Nienkamp

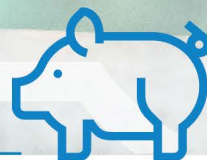
**THE RESULTS ARE EVEN BETTER
THAN EXPECTED**



Key features MultiFarrow®

- Easy fixing the sow without entering the pen
- Multiple escape routes when entering the pen
- Slats with good grip for the sow and good for piglets
- Fast and safe inspection of piglets in creep from passageway
- Easy and good cleaning as crate and creep covers can be lifted
- Easy entering for the sow because the front of pen can be opened completely
- Piglets can easily find their way into the creep area
- Sow is in close contact with piglets in the creep area
- In combination with the feeder, the piglets can eat together with the sow
- Feeder in combination with farrow to wean results in no weaning dip by the piglets

MultiFarrow® projects



MultiFarrow®



About us

Nijenkamp Livestock Equipment has been active for more than 50 years as a stable organizer for pig farming.

After Harm Nijenkamp officially established Nijenkamp Stal-inrichting in 1966, the first employees soon came, eventually growing out to a team of 30 employees. Initially the parts were made from an old stable, the stable was exchanged in 2004 for a workshop with a complete machine park and drawing department where the layout is worked out.

Over the years, both the product range and the working area have been greatly expanded. We like to listen to our customers in order to design a farm that fulfills the wishes for interior design and work enjoyment.

Nijenkamp stable equipment's core activities are the design, production, installation and assembly of complete stable equipment, feed storage, feed kitchens, (computer-controlled) feed installations, drinking water systems and all technical installations. This is done with products from our own factory and supplemented with parts from well-known reputable suppliers.

